

Philip Webb Award 2018 - Information

An annual award from the SPAB for recent graduates and Part II students at UK Schools of Architecture



The competition

Judged by an expert architectural panel, the Society for the Protection of Ancient Buildings (SPAB) Philip Webb Award is a design-orientated competition encouraging sympathetic reuse of existing buildings and sensitive new design in an historic context.

The competition is a unique opportunity for students and architects in the early stages of their career who are interested in sustainability, reuse of old buildings and conservation practice to engage with the SPAB's principles and showcase their skills.

The brief

To devise a scheme which sympathetically revitalises a historic building for reuse.

The scheme should incorporate both careful repair of existing fabric and a significant element of new construction in a contemporary design.

Prizes

1st prize £1000 2nd prize £500 3rd prize £100

Competition entries will be publicised by the SPAB

Eligibility

- All students at UK Schools of Architecture who have achieved RIBA Part I and are currently working towards RIBA Part II.
- Recent Part II graduates who completed their studies in 2016 or 2017.
- Entrants may submit work singly or as part of a team, though in that event any prize money awarded will be shared.

Competition dates

Submission of entries to the competition:

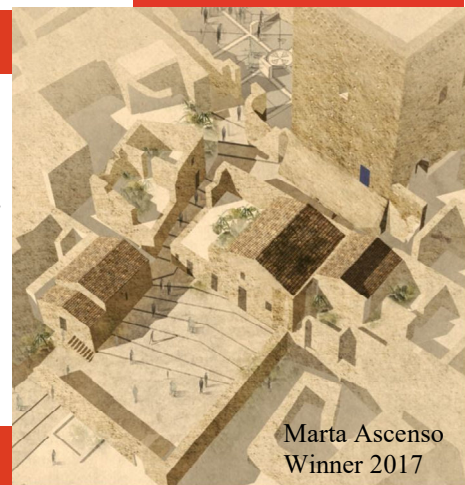
Opens 20 July 2018

Closes 14 September 2018 at 5pm

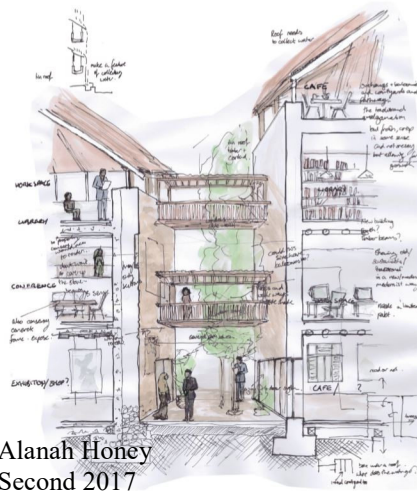
Entries received outside the submission period will not be considered.

Go to **www.spab.org.uk** to download Notes for Entrants and an entry form.

Please send any queries to: **education@spab.org.uk**



Marta Ascenso
Winner 2017



Alanah Honey
Second 2017



Kate Nicholson
Third 2017



Lilian Main
Commended 2017