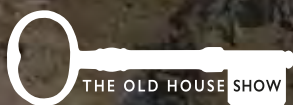


# THE OLD HOUSE SHOW

THE ART & CRAFT OF BUILDING CARE

2018 PROGRAMME



# Britain's best-selling period homes magazine



SAVE  
50%

## PERIOD LIVING Beautiful English Cottages



**SHOW OFFER**  
Subscribe to *Period Living* for just £25 plus receive a **FREE** copy of *Beautiful English Cottages*, worth £12.99.

To order, call 0344 848 2852 and quote 'SPAB', or visit [myfavouritemagazines.co.uk/spab](http://myfavouritemagazines.co.uk/spab)

**TERMS AND CONDITIONS** This offer entitles new UK Direct Debit subscribers to pay just £25 for 12 issues saving 50% off the cover price plus receive a free book worth £12.99. Pricing will revert to our standard offer of £41 every 12 months on the second payment made. Gift is only available for new UK subscribers. Please allow up to 60 days for the delivery of your gift. In the event of stocks being exhausted we reserve the right to replace with items of similar value. You can write or call to cancel your subscription within 14 days of purchase. Payment is non-refundable after the 14 day cancellation period unless exceptional circumstances apply. Your statutory rights are not affected. Prices correct at point of print and subject to change. For full terms and conditions please visit: [bit.ly/magtandc](http://bit.ly/magtandc). Offer ends 31 October 2018.

# WELCOME

---

Welcome to the SPAB Old House Show – a 'live' introduction to the wide range of activities undertaken by the oldest conservation charity operating in the UK.

The Society for the Protection of Ancient Buildings (SPAB) provides help and support to owners and professionals involved with old buildings, and campaigns for the conservation of our shared built heritage.

This show brought to you in partnership with Period Living, celebrates the uniquely practical nature of our interest in old buildings and offers an insight into the knowledge and experience we have gathered since we were founded, by William Morris and others, in 1877.

Our work embraces planning and technical advice, skills training, campaigning, and technical research. For many years we have run successful on-site 'working parties', but never before have we presented the full breadth of what the SPAB can offer under one roof. We hope you enjoy finding out more about us amid the superb historic surroundings of the Old Royal Naval College, and gain useful information – and perhaps inspiration – from the advice, talks, exhibitions and demonstrations.

We exist with the backing of an enthusiastic and dedicated membership. Being a SPAB member allows you both to support and participate in our activities. Now you've found us, keep in touch!

**Matthew Slocombe**  
SPAB Director



# CONTENTS

---

<b>DIRECTOR'S WELCOME</b>	<b>3</b>
<b>EXHIBITION FLOOR PLAN</b>	<b>5</b>
<b>WHAT'S ON: TALKS PROGRAMME</b>	<b>6</b>
<b>OLD HOUSE SHOW SPEAKERS</b>	<b>8</b>
<b>WHAT'S ON: ADVICE AND CAREERS</b>	<b>10</b>
<b>WHAT'S ON: CRAFT DEMONSTRATIONS</b>	<b>11</b>
<b>THE SPAB AND THE OLD ROYAL NAVAL COLLEGE</b>	<b>12</b>
<b>JOIN THE SPAB, BECOME A MEMBER</b>	<b>13</b>
<b>PERIOD LIVING: GUIDE TO LISTED BUILDINGS</b>	<b>15</b>
<b>MAINTENANCE MADE EASY: SPAB'S TOP TEN TIPS</b>	<b>18</b>
<b>EXHIBITOR INDEX</b>	<b>21</b>

---

IN PARTNERSHIP WITH  
**PERIOD LIVING**





SASH WINDOW & TIMBER RESTORATION



*Proud to support the SPAB*



*Proud to maintain their  
Sash Windows*



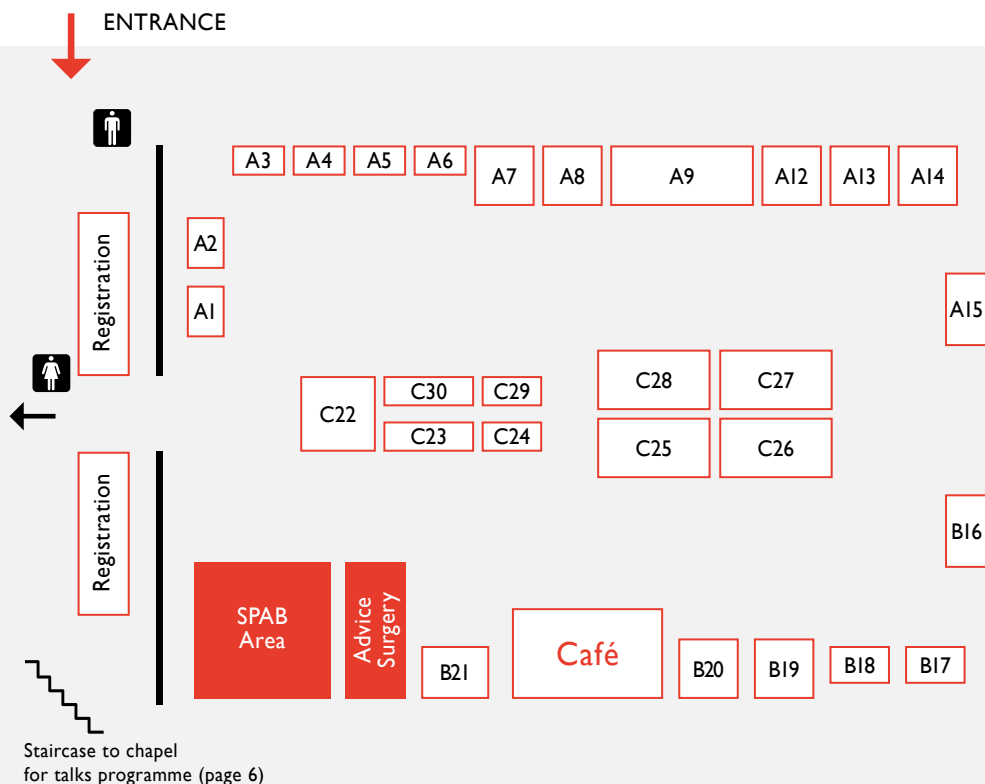
[www.kierson.co.uk](http://www.kierson.co.uk)

Blackstones Farm • Bracken Lane • Retford • Notts • DN22 0PQ

Office: 01777 706363 • Site: 07711 718601

Email: [sales@kierson.co.uk](mailto:sales@kierson.co.uk)

# FLOOR PLAN



## SPAB Area:

Information Point, Membership,  
Books, Careers Advice

AABC Register  
Between Time Ltd  
Chalk Down Lime Ltd  
Cornish Lime Co  
DBR Limited  
Historic England  
House Detectives  
Inkpen Downie

J & JW Longbottom Ltd  
James Mackintosh Architects  
Kierson  
Knauf Insulation  
Lime Green Products Ltd  
Linney Cooper Ltd  
Locker & Riley  
Old House Store  
Period Living  
Selectaglaze  
Stephen Bull, HBCR

A1 Storm Windows  
C29 The Limecrete Company Ltd  
A12 Topbond  
C25 Triskele Building Conservation  
B20 Tudor Roof Tile Co. Ltd  
A13 Ty Mawr Lime  
B18 Wienerberger Heritage Service  
C26 Wilson George Restoration  
C22  
C28  
A9

C24  
C23  
A14  
A8  
A2  
C30  
B21  
A6



# TALKS PROGRAMME

---

**Venue:** The Chapel of St Peter and St Paul. Entry to the chapel is from the colonnade area or via the staircase in the registration area.

## FRIDAY 7 SEPTEMBER

- 10:45 - 11:15 William Morris and  
Conservation: *The SPAB  
Approach to Historic Buildings*  
**Matthew Slocombe**
- 11:30 - 12:15 Keynote Speech:  
*Why Heritage Matters*  
**Lloyd Grossman**
- 12:30 - 13:00 Dealing with Damp:  
*Diagnosis and Treatment*  
**Douglas Kent**
- 13:15 - 13:45 Working with World Heritage:  
*Conservation at the Old Royal  
Naval College*  
**Martin Ashley**
- 14:00 - 14:30 Retrofitting Old Buildings for  
Energy Efficiency: *Key Principles*  
**Jonathan Garlick**
- 14:45 - 15:15 New Design for Old Buildings -  
the SPAB Approach  
**Iain Boyd**
- 15:30 - 16:30 Getting Started and Moving On  
in Conservation: *Careers and  
Professional Development Forum  
with an Expert Panel*  
**Chair: Rebecca Thompson**

## SATURDAY 8 SEPTEMBER

- 10:30 - 11:00 Maintenance Matters:  
*The Routine Care of Old  
Buildings, Spotting and Tackling  
Common Problems*  
**James Innerdale**
- 11:15 - 11:45 Exploring Your Home's History  
**Ellen Leslie**
- 12:00 - 13:00 Living with your Old Building:  
*Forum with an Expert Panel*  
**Chair: Douglas Kent**
- 13:10 - 13:40 'The stateliest procession of  
buildings we possess': *A Building  
and Conservation History of the  
Old Royal Naval College*  
**Will Palin**
- 14:00 - 14:30 William Morris and Arts &  
Crafts Style  
**Helen Elletson**
- 14:45 - 15:15 Historic Surfaces:  
*Plasters, Paints and Papers*  
**Rosie Shaw**
- 15:30 - 16:00 Fire Protection for Historic  
Homes  
**Charles Harris**
- 16:15 - 16:45 New Design for Old Homes:  
*Extension and Adaptation*  
**Roger Hunt**



By Appointment to  
Her Majesty The Queen  
Manufacturer and Supplier  
of Secondary Glazing  
Selectaglaze Ltd.  
St Albans

# selectaglaze

Secondary Glazing

**Visit stand C28 to see how Selectaglaze's discreet  
secondary glazing can help make your  
heritage or Listed property:**

**WARMER**



**QUIETER**



**SAFER**



T: 01727 837271 E: [enquiries@selectaglaze.co.uk](mailto:enquiries@selectaglaze.co.uk)  
W: [www.selectaglaze.co.uk](http://www.selectaglaze.co.uk)





# SPEAKERS FRIDAY 7 SEPTEMBER

**KEYNOTE SPEAKER:****Loyd Grossman**

Entrepreneur, Writer and  
Broadcaster

**Jonathan Garlick**

Technical Officer  
The SPAB

**Martin Ashley**

Partner and Senior  
Conservation Architect  
Martin Ashley Architects

**Chloe Granger**

Crosby Granger  
Architects

**Nina Bilbey**

Senior Stone Carving Tutor  
City & Guilds of London  
Art School

**Douglas Kent**

Technical and Research  
Director  
The SPAB

**Iain Boyd**

Chairman  
The SPAB

**Rachel Morley**

Director  
Friends of Friendless  
Churches

**Nathalie Cohen**

Archaeologist  
National Trust

**Matthew Slocombe**

Director  
The SPAB

**Sarah Freeman**

Inspector of Historic  
Buildings and Areas  
Historic England

**Rebecca Thompson**

Director  
Thompson Heritage  
Consultant





# SPEAKERS SATURDAY 8 SEPTEMBER

---



**Sue Bowman**  
Heritage Property  
Solicitor



**Emma Lawrence**  
Head of Casework  
The SPAB



**Helen Elletson**  
Curator  
The William Morris  
Society



**Ellen Leslie**  
Heritage Consultant  
and Historian



**Charles Harris**  
National Fire Advisor  
Historic England



**Will Palin**  
Conservation Director  
Old Royal Naval College



**Roger Hunt**  
Author and  
Journalist



**Rosie Shaw**  
Historic Interiors  
Consultant and  
Architectural Paint  
Researcher



**James Innerdale**  
Architect and Historic  
Buildings Consultant



**Tanya Szendeffy**  
Conservation Officer  
Rother District Council



**Douglas Kent**  
Technical and Research  
Director  
The SPAB



# ADVICE & CAREERS

---

**Venue:** Queen Mary Undercroft. Visit the Advice Surgery at the SPAB Area.

Free and impartial advice is available from our Advice Surgery. We have three types available:

## TECHNICAL ADVICE

Our technical advisers can help with queries about repairs, defects, materials and construction techniques. They can also give you suggestions for architects, surveyors, builders, engineers and others, such as insurers, to help you with your problem or project.

## CASEWORK ADVICE

Our casework advisers can help you with questions about the planning and listed building consent process. They can also provide pre-application advice (on alterations and extensions) and give assistance on questions regarding local campaigning. Casework advisers cannot provide names of building professionals.

## CAREERS ADVICE

Our careers desk is open on both days from 10:00 – 12:00 and from 13:00 – 15:00. No appointments necessary. The morning and afternoon sessions have different focuses:

### FRIDAY

- 10:00 - 12:00** Construction Skills,  
Craftsmanship and Practical  
Conservation Skills
- 13:00 - 15:00** Architecture, Surveying,  
Engineering, Accreditation

### SATURDAY

- 10:00 - 12:00** Construction Skills,  
Craftsmanship and Practical  
Conservation Skills
- 13:00 - 15:00** Legislation, Building Control  
and Heritage Organisations

## FOR PERIOD LIVING SUBSCRIBERS

If you're a *Period Living* subscriber bring your subscriber number to our Advice Surgery welcome desk, in the SPAB Area, on Saturday 8 September to book a one-to-one advice slot with Douglas Kent, SPAB Technical and Research Director; and *Period Living* contributor. Appointments will be given on a first-come-first-served basis.

## JUST DROP IN

The Advice Surgery operates on a drop-in basis and the slots are allocated on a first-come-first-served basis. Advice slots are 15 minutes and are limited to one enquiry. Register early in the day to avoid disappointment.

## AFTER THE SHOW

The Knowledge Base on the SPAB website provides advice on a range of subjects such as maintenance, energy efficiency, planning, extensions and more. The SPAB technical advice line is open Monday to Friday, 9:00 to 12:00 on 020 7456 0916 (part-funded by Historic England).

# CRAFT DEMONSTRATIONS

**Venue:** Colonnade outside the main entrance to the chapel.

The SPAB plays an important role in nurturing and developing the hands-on skills needed to care for old buildings.

Learn more about the craft skills that are at the heart of building conservation.

- Our stonemason will be working with limestone in stone-carving and letter-cutting workshops with plenty of opportunity for hands-on learning
- Learn about the fantastic material that underpins an enormous amount of building conservation work in our lime demonstrations
- Try your hand at plastering onto laths or watch our demonstrator carry out



decorative plasterwork with running moulds and lime putty

- See traditional carpentry techniques.

## INTRODUCTORY TALKS ON BUILDING CRAFTS

Demonstrators will give introductory talks about their craft, materials and tools throughout the day, please check below for start times. Talks last approximately 15 minutes.

### FRIDAY 7 SEPTEMBER

10:00 & 13:30	Stone Carving & Letter-cutting
10:30 & 14:00	Lime Demonstration
11:00 & 14:30	Plasterwork
11:30 & 15:00	Brick Coursing & Bonds
12:00 & 15:30	Timber Framing & Other Techniques
12:30 & 16:00	Blacksmithing tools & Techniques

### SATURDAY 8 SEPTEMBER

10:00 & 13:30	Stone Carving & Letter-cutting
10:30 & 14:00	Lime Demonstration
11:00	Slate Roofing
11:30 & 15:00	Brick Coursing & Bonds
12:00	Carpentry Techniques
12:30 & 16:00	Stained Glass
14:30	Tile Roofing
15:30	Sash Window





## THE SPAB

The SPAB gives old buildings a future. From cottages to castles and from churches to cathedrals we are here to help buildings and the people who care for them. Through our unique training schemes, courses, advice and research we help people put our expertise into practice.

Founded by William Morris in 1877, the SPAB was established in response to the work of Victorian architects whose enthusiasm for harmful restoration caused irreparable damage. Today the SPAB encourages excellence in new design to enrich and complement the built historic environment. We train new generations of architecture professionals and building craftspeople to shape this landscape with sensitivity and skill,

and we play a statutory role as adviser to local planning authorities. In our casework we campaign actively to protect old buildings at risk.

The SPAB is a membership organisation, join us and help us to protect, care and repair historic buildings into the future. We need your support to save old buildings from decay, harmful alteration and demolition.



## OLD ROYAL NAVAL COLLEGE

The centrepiece of the Maritime Greenwich World Heritage Site, the classical buildings of the Old Royal Naval College were designed by the UK's greatest architects and are considered amongst the finest in Europe. Featuring the sumptuous Painted Hall and the neo-classical chapel, the site has seen a variety of uses, as the Tudor Greenwich Palace, the Royal Naval Hospital for Seamen and then the Royal Naval College.

The Painted Hall, decorated by Sir James Thornhill, is the jewel of the Old Royal Naval College. It is considered the greatest Baroque decorative scheme in the UK, and features a cast of hundreds of historical, mythological, and contemporary figures.

The National Lottery-funded Painted Hall project has been live for two years, during

which time visitors have a once-in-a-lifetime opportunity to see the masterpiece at close quarters and to observe the conservators at work via a special observation deck. This is the last chance to get within touching distance of the ceiling, as the tours finish at the end of September. If you didn't manage to get a place on the special tours organised for Old House Show visitors, don't worry you can find availability on other tours here:

**[ornc.org/paintedhall](http://ornc.org/paintedhall)**



BECOME A MEMBER

# HELP US TO PROTECT, CARE FOR AND REPAIR HISTORIC BUILDINGS

**We need your support to save old buildings from decay, harmful alteration and demolition.**

Join today for 20% off your first year of membership. Visit the SPAB Area to the right of the main entrance in the Queen Mary Undercroft for more information.\*



## AS A MEMBER YOU RECEIVE:

- The quarterly SPAB Magazine
- Our Property List of historic buildings for sale across the country
- Priority booking on selected SPAB courses
- Member-only events
- Regional events across the UK
- Exclusive online content
- Other amazing special offers

**Support the SPAB**  
take out membership today

\*This offer is exclusively available to those signing up with Direct Debit at the Old House Show, 7-8 September. It cannot be used with any other offer and is not valid for Under 30s membership.



spab.org.uk



@SPAB1877



Old House Show

#OldHouseShow2018



# TRISKELE

## BUILDING CONSERVATION

TRISKELE CONSERVATION ARE MULTI-DISCIPLINARY  
SPECIALISTS IN THE STRUCTURAL ASSESSMENT, REPAIR  
AND REFURBISHMENT OF TRADITIONAL AND HISTORICAL  
BUILDINGS.

CONTACT US TO DISCUSS YOUR PROJECT  
[TRISKELECONSERVATION.COM](http://TRISKELECONSERVATION.COM)  
[INFO@TRISKELECONSERVATION.COM](mailto:INFO@TRISKELECONSERVATION.COM)  
+44 (0) 7743 471185





Owning a listed home is both a privilege and a responsibility. *Period Living* magazine explains what owning a property with special status entails, and the scope for repairing and improving it.

When a home is listed it brings prestige and increases its value, but it also places restrictions on what you can do, and increases the cost of repairs and improvements. However, if you are willing to invest the necessary care and funds, a listed home can become a source of great pride that enables you to leave a legacy on Britain's architectural heritage.

### WHY ARE BUILDINGS LISTED?

When a home is judged to be 'of special architectural or historic interest', it is added to the listed buildings register. This protects

it from being inappropriately modified or poorly maintained by any current or future owners. While minor repairs are usually acceptable, most home-improvement works are subject to listed building consent.

### IS MY HOME AFFECTED?

There are around half a million listed structures in the UK. This includes all buildings built before 1700 that survive in anything like their original condition, along with most dating from 1700 to 1840.

Most listed buildings (92 per cent) are classed as Grade II, considered of special



[www.highly-decorated.co.uk](http://www.highly-decorated.co.uk)  
[info@highly-decorated.co.uk](mailto:info@highly-decorated.co.uk)

020 314 34779  
07736 778076

***Make Your Roof Unique***  
*recommended by conservationists*



01797 320202  
[www.tudorrooftiles.co.uk](http://www.tudorrooftiles.co.uk)

***any size or shape made to order***

interest. Five per cent are Grade II\*, considered of more than special interest. Buildings of outstanding or national architectural or historic interest make up the three per cent listed as Grade I.

### WHAT DOES THE LISTING COVER?

Buildings are listed in their entirety, inside and out, though some parts may be more important than others. Your local authority should be able to supply a copy of the list description. Just because a feature isn't mentioned, doesn't mean it is not protected. Other structures within the 'curtilage' of the building may also be included, such as garden walls and paving.

### CAN I MAKE CHANGES TO MY HOUSE?

Generally any like-for-like repairs must

match both the original detail and materials, while 'improvements' may have to be reversible. Extensions are sometimes seamless, but designs that show a distinction between old and new – such as a minimalist glazed addition – are often preferred. To create a scheme that satisfies both you and the local authority, it's best to hire an architect with experience of listed buildings, and the same goes for your choice of builder.

Bear in mind that consent can be required for seemingly minor changes, such as cleaning brickwork, painting, or replacing modern unsympathetic windows.

You must apply for listed building consent to the local authority planning department, along with any planning permission or building control approvals.







# MAINTENANCE MADE EASY

## SPAB'S TOP TEN TIPS

---

- Take a few moments to check the state of your roof for slipped or missing tiles. If you are standing outside a pair of binoculars can be useful to help you spot any faults. Inside, look for gaps or daylight showing through the roof overhead.
- Outside, look for blocked downpipes (best done during heavy rain to see water coming from any leaky joints – in dry weather look for stained brickwork).
- Every autumn, clear any plants, leaves and silt from gutters, hopperheads, flat roofs and drainage channels. It's a good idea to do this in spring too to deal with anything that might have found its way into the wrong place.
- Check ground level gullies and drains to make sure they are clear of debris like leaves, twigs and even things like balls and toys - and have them cleaned out if necessary.
- Remove potentially damaging vegetation from behind downpipes by cutting back or removing the plant altogether.
- Use a hand mirror to look behind rainwater pipes as splits and cracks in old cast iron and aluminium often occur here and are not easily noticed.
- Fit bird/leaf guards to the tops of soil pipes and rainwater outlets to prevent blockages.
- Have gutters refixed if they are sloping the wrong way or discharging water onto the wall.
- If sections are beyond repair, make sure that replacements are made of the same material as the originals (on older houses this is sometimes lead, but more usually cast iron).
- Regular painting of cast iron is essential to prevent rust – and keeps your property looking good!

**And here's a very important extra tip** - always seek help from a professional or visit the Knowledge Base on the SPAB website.



UNLOCK THE HISTORY OF YOUR HOUSE



STICKS RESEARCH AGENCY

Have you ever wondered when your house was built, or who lived there?

Perhaps you want to trace the history of an ancestral home? Are you curious about the rich social history of your area?

Sticks Research Agency, the organisation behind the research for shows such as 'Who Do You Think You Are?', 'House Detectives' and 'Hidden House History', can provide you with the answers.

Our team includes qualified historians, architectural experts and archive researchers across the UK and Ireland.

For information about our house detective services, visit us at [www.sra-uk.com](http://www.sra-uk.com) or email [admin@sra-uk.com](mailto:admin@sra-uk.com)



**MANIFEST**  
ARCHITECTS | DESIGNERS | MAKERS

Specialists in  
natural building,  
timber framing &  
historic conservation

3 Thames St | Eynsham | OX29 4HF  
01865 882 387  
[mail@mademmanifest.co.uk](mailto:mail@mademmanifest.co.uk)



Manifest is a multi-disciplinary practice based in Oxfordshire, working across England & Wales.

We are architects, accredited in conservation (AABC), and specialise in traditional and natural building materials, with a deep understanding of timber structures. Unusually among architects, we are also experienced oak-framers, and are able to design, specify and build in-house.

Whether you need practical & conservative repair, or new, traditionally-built structures designed to harmonise with your period home, do get in touch.

# AABC

Register of Architects Accredited in Building Conservation

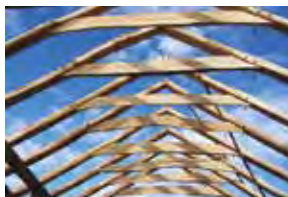
AABC is a self-financing, not-for-profit building conservation accreditation Register established in 1998 with the assistance of English Heritage. Its aim is to offer clients the reassurance of competency when seeking skilled and experienced conservation architects, safeguarding interests of the client and our historic built environment alike. If the survival of our historic buildings matter to you, ensure your architect is accredited!

**Find the AABC Register at:**  
**[www.aabc-register.co.uk](http://www.aabc-register.co.uk)**



## Russell Timberstructures

Specialists in the repair and conservation of historic timber buildings.  
New timber framed structures, community and eco build projects.



Contact: John and Henry Russell  
0776 161 2079  
[timberstructures@btinternet.com](mailto:timberstructures@btinternet.com)

# EXHIBITOR INDEX

## **AABC Register**

**A7**

### **Register of Architects Accredited in Building Conservation**

A register of architects who demonstrate skills and competency in building conservation

[www.aabc-register.co.uk](http://www.aabc-register.co.uk)

## **Between Time Ltd**

**A15**

### **Conservation Building Main Contractor**

Carrying out conservation contracts to listed buildings, churches, museums and heritage sites

[www.betweentime.uk.com](http://www.betweentime.uk.com)

## **Chalk Down Lime**

**B17**

### **Traditional Lime Mortar Manufacture and Supply**

Manufacturers and suppliers of hot-mixed lime mortars, plasters, renders, lime putty and limewash throughout the UK since 1996

[www.chalkdownlime.com](http://www.chalkdownlime.com)

## **Cornish Lime Co**

**B16**

### **Building Limes & Mortars**

Manufacturer of lime putty, mortars and cornerstone drymix products

[www.cornishlime.co.uk](http://www.cornishlime.co.uk)

## **DBR Limited**

**C27**

### **Historic Building Repair and Conservation**

Cleaning, repair and conservation of historic fabric including masonry, stucco, plaster, flooring, leadwork, slate and polychrome surfaces

[www.dbrlimited.com](http://www.dbrlimited.com)

## **Historic England**

**A5**

### **Public Heritage Agency**

Helping people care for England's historic environment

[www.historicengland.org.uk](http://www.historicengland.org.uk)

## **House Detectives**

**A4**

### **Historical Research and Architectural Interpretation**

Trace the history of your house, who lived there, when it was built and how it was used, using a team of professional researchers

[www.house-detectives.co.uk](http://www.house-detectives.co.uk)

## **Inkpen Downie**

**A3**

### **Architecture & Design Ltd Architects**

Architects, interior design, AABC, heritage building consultants, planning services

[www.inkpendownie.co.uk](http://www.inkpendownie.co.uk)

## **J & JW Longbottom Limited**

**A1**

### **Cast Iron Foundry**

Foundry manufacturing traditional cast iron drainage and associated products

[www.longbottomfoundry.co.uk](http://www.longbottomfoundry.co.uk)

## **James Mackintosh Architects**

**C29**

### **Heritage and Conservation Accredited Architects**

RIBA chartered practice working exclusively on traditional and listed properties, heritage sites and conservation areas

[www.jamesmackintosharchitects.com](http://www.jamesmackintosharchitects.com)

## **Kierson**

**A12**

### **Sash Window and Timber Restoration**

Market leader in the sympathetic restoration and upgrading of sash and casement timber windows

[www.kierson.co.uk](http://www.kierson.co.uk)

## **Knauf Insulation**

**C25**

### **Insulation Manufacturer**

Leading the change in smarter insulation solutions for a better world

[www.knaufinsulation.co.uk](http://www.knaufinsulation.co.uk)

## **Lime Green Products Ltd**

**B20**

### **Manufacturer of Lime Mortars, Renders, Plasters**

National supplier of ready-mixed easy to use lime-based materials including hydraulic and one-coat lime plaster Solo.

[www.lime-green.co.uk](http://www.lime-green.co.uk)

## **Linney Cooper Ltd**

**A13**

### **Carpet Consultants**

Suppliers and installers of quality floorcoverings

[www.linneycooper.co.uk](http://www.linneycooper.co.uk)



# EXHIBITOR INDEX

## Locker & Riley

### Artisans in Plaster

Restoration and renovation of fibrous plaster ceilings and mouldings

[www.lockerandriley.com](http://www.lockerandriley.com)

## Old House Store

### Traditional Building Materials Supplier

Manufacturer of lime mortars, renders and plasters. Supplier of breathable paints, bricks, tiles, ironmongery, laths etc

[www.oldhousestore.co.uk](http://www.oldhousestore.co.uk)

## Period Living

### Magazine and Bookazine Publisher

*Period Living* is a monthly magazine offering beautiful real homes and gardens, decorating inspiration and practical advice

[www.realhomes.com/period-living](http://www.realhomes.com/period-living)

## Selectaglaze

### Secondary Glazing Manufacturers and Installers

Bespoke secondary glazing providers for listed and heritage buildings UK wide

[www.selectaglaze.co.uk](http://www.selectaglaze.co.uk)

## Stephen Bull, HBCR

### Building Conservation

Historic building conservation and repair

## Storm Windows

### Secondary Glazing

A bespoke secondary glazing system designed for listed, classic and historic properties

[www.stormwindows.co.uk](http://www.stormwindows.co.uk)

## The Limecrete Company Limited

### Specialist Limecrete Flooring

A specialist contractor for vapour permeable limecrete floor solutions

[www.limecrete.co.uk](http://www.limecrete.co.uk)

B18

## Topbond

### Cast Stone, Joinery

Part of the Topbond Group, Broadmead Renaissance Cast Stone & Howard Joinery supply bespoke products

[www.topbond.co.uk](http://www.topbond.co.uk)

A14

C26

## Triskele Building Conservation

A8

### Conservation and Refurbishment of Historic Buildings

Multi-disciplinary specialists in the repair, conservation and refurbishment of traditional and historic buildings

[www.triskeleconservation.com](http://www.triskeleconservation.com)

C22

## Tudor Roof Tile Co. Limited

A2

### Handmade Clay Roof Tile Manufacturer

Clay plain and peg tiles, handmade in England using traditional skills and fully guaranteed

[www.tudorrooftiles.co.uk](http://www.tudorrooftiles.co.uk)

C28

## Ty Mawr Lime

C30

### Sustainable Building Materials for Healthier Homes

Market leader in the design, manufacture and distribution of environmentally-friendly materials and systems

[www.lime.org.uk](http://www.lime.org.uk)

A9

## Wienerberger Heritage Service

B21

### UK's Leading Provider of Wall, Roof and Landscaping Innovations

A specialist conservation service that creates bespoke handmade roof tiles and fittings.

[www.wienerberger.co.uk](http://www.wienerberger.co.uk)

C24

C23

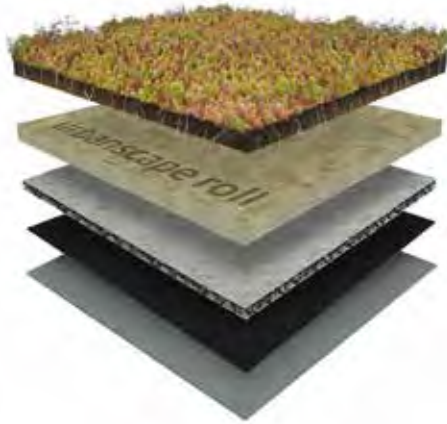
## Wilson George Restoration

A6

### Restorers of High Relief Paper

Restorers of high relief papers and ceiling panels. Specialising in Lincrusta, Anaglypta, Cameoid, Lignomur and Tynecastle

[www.wilsongeorerestoration.co.uk](http://www.wilsongeorerestoration.co.uk)



# Green Roof System

- High water absorption
- Efficient installation
- Sustainable solution

[www.green-urbanscape.com](http://www.green-urbanscape.com) • [urbanscape.uk@knaufinsulation.com](mailto:urbanscape.uk@knaufinsulation.com) • 0845 878 0178

 @Urbanscapeuk

**knauf**INSULATION

*Above and beyond*

# Old house store

Traditional building materials



- EcoRight Pre-mixed hydraulic lime mortars
- Traditional fat lime mortars, renders, plasters & putties
- Stockist of Fassa renders, plasters & paints
- Stockist of NHL 3.5 & NHL5
- Breathable paints and lime wash
- Doors & Flooring
- Ironmongery
- Natural insulation & carrier boards
- Handmade bricks & tiles
- Misc. traditional materials

Tel: 0118 946 9146 • [www.oldhousestore.co.uk](http://www.oldhousestore.co.uk)

Unit 2 Paddock Road Industrial Estate, Caversham, Reading RG4 5BY